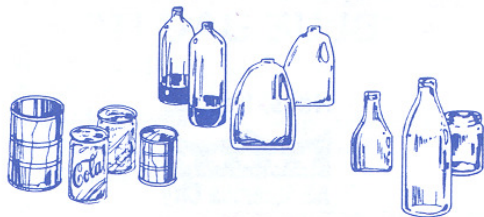


Follow These Simple Steps

## **BLUE OR CLEAR BAG #1**

Collect THESE recyclables and place them together (commingled) in one “Blue Bag”  
**PLEASE TIE SECURELY**



### **GLASS JARS AND BOTTLES**

Please empty the jars and bottles and **REMOVE** lids and caps. Metal lids and caps are recyclable, but they must be removed from the container. Labels **do not** need to be removed. **No ceramic, bakeware, light bulbs, window glass or mirrors. DO NOT break** glass to save space.

### **ALUMINUM AND STEEL (TIN) BEVERAGE & FOOD CANS**

Empty the cans and **RINSE** clean. Labels **do not** need to be removed. Flattening cans helps save space, but is not required. Clean aluminum foil and pie tins are also acceptable.

### **PLASTIC CONTAINERS & LIDS, PLASTIC BEVERAGE CONTAINERS**

Examples are gallon & half gallon jugs from milk, juice, drinking and distilled water, as well as the 1, 2, and 3 liter sizes of pop bottles. Any plastic container #1-7 such as laundry detergent containers, yogurt containers, take-out containers, etc.

Empty your recyclable plastics. Labels **do not** need to be removed. Flattening containers help save space.

Do not include plastic bags (grocery bags, bread bags, etc). These items are not acceptable. Plastic bags can be taken to Wal-Mart or Dillons for Recycling.

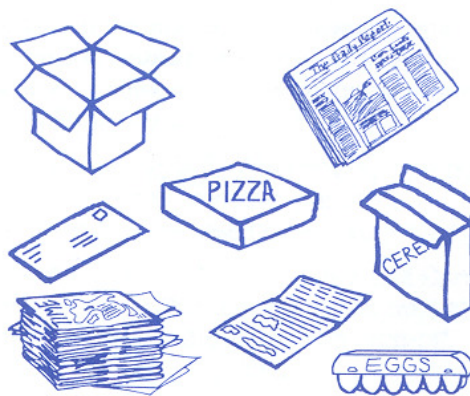
## **BLUE OR CLEAR BAG #2**

In a **SEPARATE “BLUE BAG,”** collect the following paper & cardboard materials.  
**PLEASE TIE SECURELY**

**NEWSPAPERS:** Inserts are acceptable.

**MIXED PAPER:** Junk mail, phone books, catalogs, magazines and clean miscellaneous paper products also are okay. Place these items in the blue recycling bag **WITH** cardboard.

**CARDBOARD:** Both corrugated (large, as well as small) and non-corrugated from: UPS, appliances, TV's, radios, toys, etc. and “product boxes” such as cereals, cakes and other mixes, pudding, potato flakes, rice, etc.; just **REMOVE** liners. Also pizza boxes and egg cartons (**no styrofoam**) are acceptable.



If you have **LARGE** cardboard boxes from appliances, UPS packages, etc. they must be broken down. Smaller boxes must be Bagged and Tied.

## **About the “Blue Bags”**

The Blue Bags are available for purchase at various local retail stores (Wal-mart or Ace Hardware).

### **How Will the Recycling Program Work?**

After you have filled the Blue Bags with the appropriate recyclables, **TIE THEM SECURELY.** Place the bags approximately 3 feet away from your polycart in the location where your trash is normally collected.

### **DAYS OF COLLECTION:**

**Trash and Recyclables** will be collected on the same day. They will not be collected at the same time but will be collected on the same day.

The “Simple Steps” on the preceding pages, **MUST BE FOLLOWED** to assure pick-up. Blue or Clear Bags of recyclables will be taken to a processing center where the recyclables will be separated from each other and sent to market to become new products.

*Please use the Blue or Clear Bags only for your recyclables and NOT for trash. Black, brown, or some color other than blue or clear should be used for trash.*

Please set out Blue or Clear Bags only when they're full. This conserves bags and the City's collection budget.

**REMINDER:** Please be sure to fasten the Blue Bag **SECURELY** to prevent spillage & litter.

### **MAKE YOUR RECYCLING COUNT**

Certain items can actually contaminate the material collected and make it unusable for recycling. Please **do not** include these items in the Blue Bags:

- Ceramics, crystal, glass doors, light bulbs, mirrors, pyrex, window panes, windshields, styrofoam. Please place items in trash bags.
- Aerosol Cans, Batteries, Oil/Paint Cans, Hazardous Chemicals. Please take to household hazardous waste drop-off. (Call 628-9460 for details.)

## **REFUSE (TRASH) COLLECTION**

In addition to the “Blue Bag” Recycling Program, the City of Hays provides for weekly collection of refuse (garbage and trash).

All refuse shall be bagged and meet the following requirements:

- Bags can be any color other than blue, clear or red (blue and clear is reserved for recycling and red is reserved for medical waste)
- **Do not** overstuff bags.
- Package sharp or pointed objects (sticks, broken glass, metal objects, etc.) so they will not puncture the bags.

Please place all refuse in the appropriate container. The City will provide one 95-gallon container (polycart). If additional containers are needed the customer should contact the City Clerk's office to arrange for another polycart.

The City **WILL NOT** collect tires or construction waste. Contact the Ellis County Transfer Station at 628-9460 for information or call the Public Works Department for a Special Collection at 628-7350.

Please keep the area around the collection site free of obstructions and tall weeds. Leave a clear path for workers to walk without stepping over piles of lumber or other items. If you have dogs leashed, see that they cannot reach the collection site.

## **SPECIAL SOLID WASTE COLLECTION PROGRAM**

The City of Hays provides for the Special Collection and disposal of large bulky waste that cannot be collected and disposed of through regular weekly refuse collection. For additional information or to arrange for Special Collection, contact the City of Hays Public Works-Solid Waste Division office, 1002 Vine Street, or by phone 628-7350.

## YARD WASTE/COMPOSTING

Yard waste can be taken directly to the City of Hays Compost Site (go south on General Custer from E 13<sup>th</sup> Street). Acceptable yard waste is defined as:

- grass clippings
- leaves
- garden waste
- pampas grass cut to 3' lengths
- grass clippings
- straw

All yard and garden waste must be transported to the disposal site in such a manner that will restrict loss of blowing waste. Plastic bags are an acceptable method for disposal. The yard waste must be removed from the plastic bags or other containers. Persons disposing of yard and garden waste must be prepared to collect and remove all bags at the time of disposal.

There is **no charge** for disposing of yard waste at the compost site.

### Items to avoid:

- No trees and branches (effective 11/1/08)
- No household waste or trash
- No wood products
- No paper, plastic, or metal items

The success of this program depends on you and your neighbors! Please do **not** add undesirable items to the compost pile. You can help keep costs down by contributing only **yard waste** at the site.

**Compost Operation Hours – 7 days a week/  
24 hours a day**

*Free compost is available year round!*

## (GRASS, LEAVES, GARDEN WASTE)

The City of Hays provides for the disposal of yard waste for residential refuse customers through the purchase of special yard waste tags (stickers) available at City Clerk's Office - 1507 Main. Yard waste tags (stickers) are available in groups of five (5) for a total of \$5.25 per sheet (\$1.05 per tag). Each bag of yard waste is to have a tag attached before the City Refuse crews will collect it. Bags must not weigh more than 40 lbs. **Tagged yard waste goes into the waste stream--NOT to the compost site.**

Bags of yard waste are to be placed approximately 3 feet away from the polycart where your trash is normally collected. Yard waste will be collected on the same day as regular trash but not at the same time.

### QUESTIONS? SUGGESTIONS?

Please feel free to call:

**RECYCLING, REFUSE COLLECTION, AND SPECIAL COLLECTIONS, YARD WASTE –  
City of Hays Solid Waste Division - 628-7350**

**COMPOST SITE –  
City of Hays Solid Waste Division - 628-7350**

**HOUSEHOLD HAZARDOUS WASTE –  
Ellis County Hazardous Waste - 628-9460**

**LAWN CARE –  
Ellis County Extension Office - 628-9430**

**TRANSFER STATION –  
Ellis County Landfill - 628-9460**

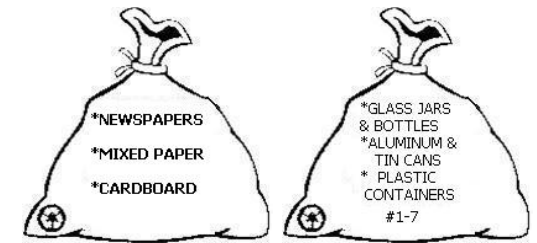
**MEDICAL WASTE –  
Ellis County Health Services - 628-9440**



Hays, Kansas



1996



**Recycling is quick, easy, and makes a difference!**

### FOLLOW THESE “3 R’s”

- Reduce...** Reduce the amount of garbage your family generates.
- Reuse...** Any time you use something over and over again, you are saving our resources.
- Recycle...** Recycling allows us to make “new” products from old ones.



**CITY OF HAYS BLUE BAG  
RESIDENTIAL RECYCLING  
PROGRAM**

**YARD WASTE COLLECTION PROGRAM**