

**ORDINANCE NO. 4041**

**AN ORDINANCE ANNEXING LAND TO THE CITY OF  
HAYS, KANSAS.**

**WHEREAS**, the following described land adjoins the City of Hays, Kansas; and

**WHEREAS**, written consent for annexation of the following described land, signed by all of the owners thereof, has been filed with the City of Hays, Kansas, pursuant to K.S.A. 12-520(a)(7); and

**WHEREAS**, the governing body of the City of Hays, Kansas finds it advisable to annex such land.

**NOW, THEREFORE, BE IT ORDAINED BY THE GOVERNING BODY OF THE  
CITY OF HAYS, KANSAS:**

**Section 1.** Pursuant to K.S.A. 12-520(a)(7) the following described land is hereby annexed and made part of the City of Hays, Kansas:

A tract of land in the Northeast Quarter of Section 20, Township 13 South, Range 18 West of the 6th Principal Meridian, Ellis County, Kansas described as follows by James Meis, PS 1533, on July 21, 2023:

Commencing at the Northeast corner of the Northeast Quarter; Thence South 01 degrees 38 minutes 11 seconds West, along the East line of the Northeast Quarter, a distance of 953.27 feet to the Point of Beginning; Thence continuing South 01 degrees 38 minutes 11 seconds West, along the East line of the Northeast Quarter, a distance of 1418.40 feet; Thence North 88 degrees 21 minutes 49 seconds West, a distance of 33.00 feet; Thence South 12 degrees 21 minutes 07 seconds West, a distance of 279.56 feet to the South line of the Northeast Quarter; Thence North 89 degrees 37 minutes 56 seconds West, along the South line of the Northeast Quarter, a distance of 778.83 feet to the North line of Interstate 70; Thence North 64 degrees 46 minutes 10 seconds West, along the North line of Interstate 70, a distance of 670.54 feet; Thence North 62 degrees 10 minutes 32 seconds West, along the North line of Interstate 70, a distance of 242.31 feet; Thence North 06 degrees 55 minutes 03 seconds East, a distance of 576.79 feet; Thence North 11 degrees 01 minutes 03 seconds East, a distance of 246.65 feet; Thence North 30 degrees 44 minutes 20 seconds East, a distance of 40.83 feet; Thence North 50 degrees 30 minutes 19 seconds East, a distance of 71.62 feet; Thence South 83 degrees 24 minutes 25 seconds East, a distance of 208.12 feet; Thence North 09 degrees 04 minutes 07 seconds East, a distance of 176.57 feet; Thence North 89 degrees 46 minutes 11 seconds East, a distance of 161.00 feet; Thence North 09 degrees 04 minutes 07 seconds East, a distance of 238.12 feet; Thence North 89 degrees 46 minutes 11 seconds East, a distance of 1107.13 feet to the Point of Beginning. Said tract contains 55.968 acres more or less.

**Section 2.** The aforesaid Ordinance shall take effect and be in force from and after passage and publication on the City of Hays Website, the official city news outlet for legal publication notifications for the City of Hays, Kansas.

**PASSED AND APPROVED** by the Governing Body of the City of Hays, Kansas, this 9<sup>th</sup> day of November, 2023.

---

SHAUN MUSIL  
Mayor

ATTEST:

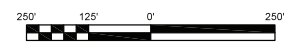
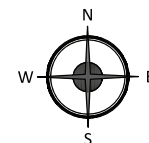
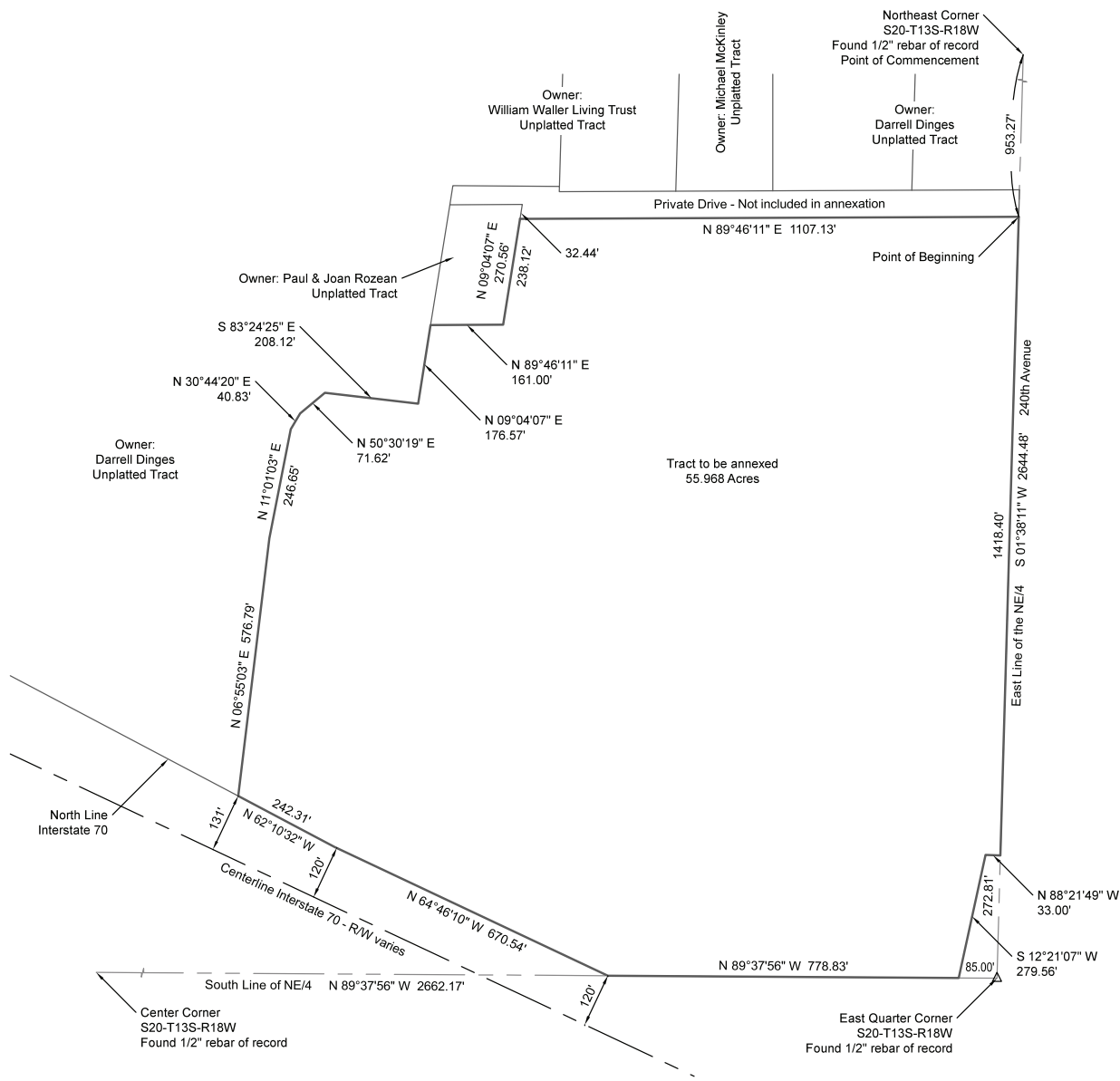
---

BRENDA KITCHEN  
City Clerk

(seal)

# ANNEXATION EXHIBIT

in the Northeast Quarter of Section 20, Township 13 South, Range 18 West, Hays, Ellis County, Kansas



**LEGEND:**

- △ Section Corner
- M Measured
- R Record

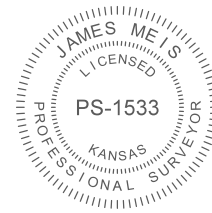
**LEGAL DESCRIPTION: Tract to be annexed**

A tract of land in the Northeast Quarter of Section 20, Township 13 South, Range 18 West of the 6th Principal Meridian, Ellis County, Kansas described as follows by James Meis, PS 1533, on July 21, 2023:

Commencing at the Northeast corner of the Northeast Quarter; Thence South 01 degrees 38 minutes 11 seconds West, along the East line of the Northeast Quarter, a distance of 953.27 feet to the Point of Beginning; Thence continuing South 01 degrees 38 minutes 11 seconds West, along the East line of the Northeast Quarter, a distance of 1418.40 feet; Thence North 88 degrees 21 minutes 49 seconds West, a distance of 33.00 feet; Thence South 12 degrees 21 minutes 07 seconds West, a distance of 279.56 feet to the South line of the Northeast Quarter; Thence North 89 degrees 37 minutes 56 seconds West, along the South line of the Northeast Quarter, a distance of 778.83 feet to the North line of Interstate 70; Thence North 64 degrees 46 minutes 10 seconds West, along the North line of Interstate 70, a distance of 242.31 feet; Thence North 06 degrees 55 minutes 03 seconds East, a distance of 576.79 feet; Thence North 11 degrees 01 minutes 03 seconds East, a distance of 246.65 feet; Thence North 30 degrees 44 minutes 20 seconds East, a distance of 40.83 feet; Thence North 50 degrees 30 minutes 19 seconds East, a distance of 71.62 feet; Thence South 83 degrees 24 minutes 25 seconds East, a distance of 208.12 feet; Thence North 09 degrees 04 minutes 07 seconds East, a distance of 161.00 feet; Thence North 09 degrees 04 minutes 07 seconds East, a distance of 238.12 feet; Thence North 89 degrees 46 minutes 11 seconds East, a distance of 1107.13 feet to the Point of Beginning.

**SURVEYOR'S CERTIFICATE:**

I, James Meis, Professional Surveyor #1533 in the State of Kansas, certify that the survey shown on this plat was made by me or under my direct supervision on July 21st, 2023. This plat is true and correct to the best of my knowledge and belief.



James Meis  
Kansas PS 1533

Werth Development Group, LLC 1300 Vine Street Hays, KS 67601	<b>DRIGGS DESIGN GROUP, PA</b> Surveying Engineering Planning 1017 Downing Avenue, Hays, Kansas 67601 www.driggsdesign.com (785) 621-4280	Project No: 2023-061 Date: 07-21-2023 Scale: 1" = 250' Sheet No: 1 of 1 Drawn By: DV
--	--	--